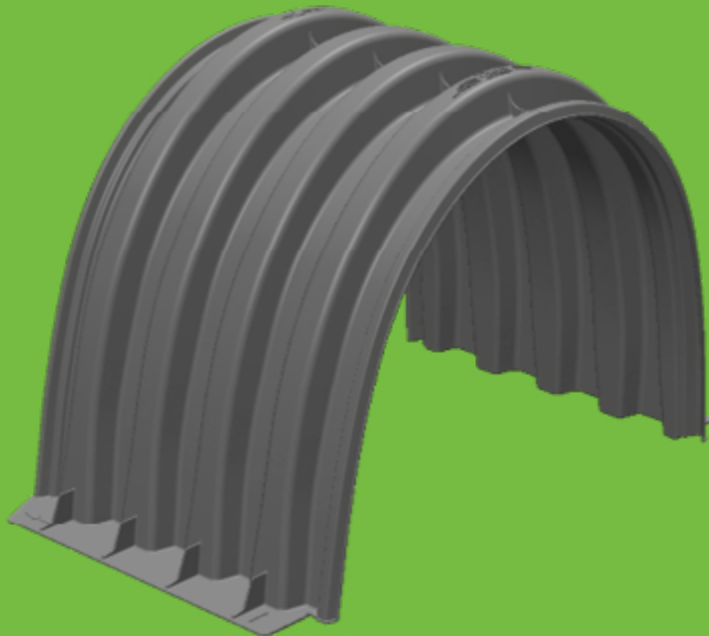


GREENRISE MODarch

DESCRIPTION: The MODarch is an arch-style stormwater management system manufactured from innovative composite materials. Ideal for shallow sites that are not tightly constrained by available footprint. With a wide range of system heights and cover requirements, MODarch can be optimized to cost-effectively and efficiently fit your project.

MODarch can be outfitted with a main header row to filter the initial stormwater runoff entering the system to improve performance and reducing long-term maintenance costs.

Ideal for applications such as rainwater harvesting, stormwater management, and emergency storage, the MODarch is a go to solution for both traditional development and low impact development, as well as green infrastructure practices.



APPLICATIONS:

- Residential/Commercial/Industrial
- Stormwater management, detention, retention, infiltration
- Sites with flexible allowable footprint
- Regions with low-cost stone backfill

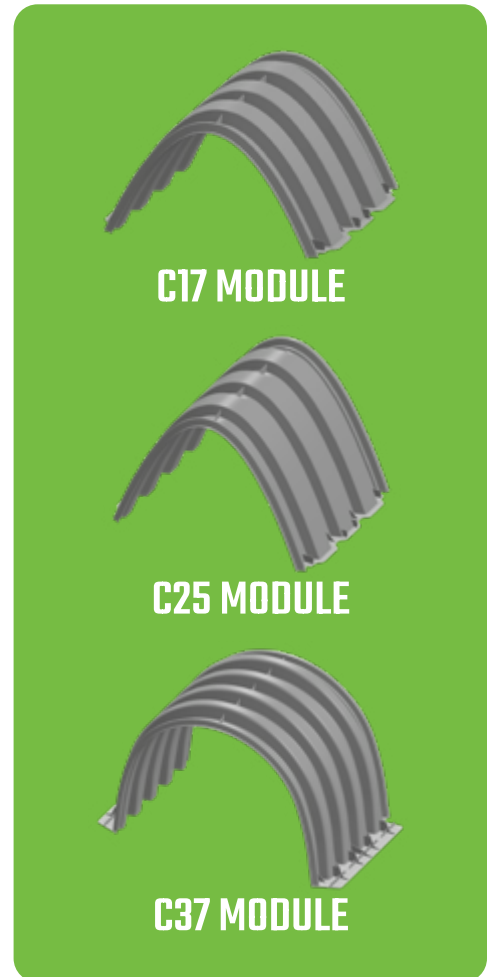
PROVIDING PRODUCT INSTALLATION AND SERVICES THROUGHOUT THE SOUTHEAST.

Tennessee | Carolinas | Florida | Texas | Georgia | Alabama | Louisiana

PRODUCT DETAILS

FEATURES & BENEFITS

- Modular, scalable, easy-to-install
- Variable cover heights from 18" minimum
- Designed for HS-20 live loads
- Exceeds specifications of ASTM F2418, F2787, and AASHTO LRFD Section 12
- Multiple product size options for optimized design
- Premium, composite materials for added safety factor
- Can be installed with a main header row for water quality



SPECIFICATIONS

| MODULE | INSIDE HEIGHT | CHAMBER STORAGE WITHOUT STONE | CHAMBER STORAGE WITH STONE ¹ | STORAGE / LINEAR FOOT | STORAGE/ LINEAR FOOT WITH STONE | HS-20 MINIMUM COVER ² |
|--------|---------------|-------------------------------|---|-----------------------|---------------------------------|----------------------------------|
| C17 | 17.5" | 5.6cf | 11.36cf | 2.27cf/ft | 4.61cf/ft | 18" |
| C25 | 25" | 9.8cf | 17.45cf | 3.98cf/ft | 7.08cf/ft | 18" |
| C37 | 37" | 27.8cf | 42.07cf | 10cf/ft | 16.74cf/ft | 18" |

1. 6" above, below and between chambers, with 40% stone porosity
 2. 18" cover is to top of pavement. 24" cover required for unpaved vehicular applications